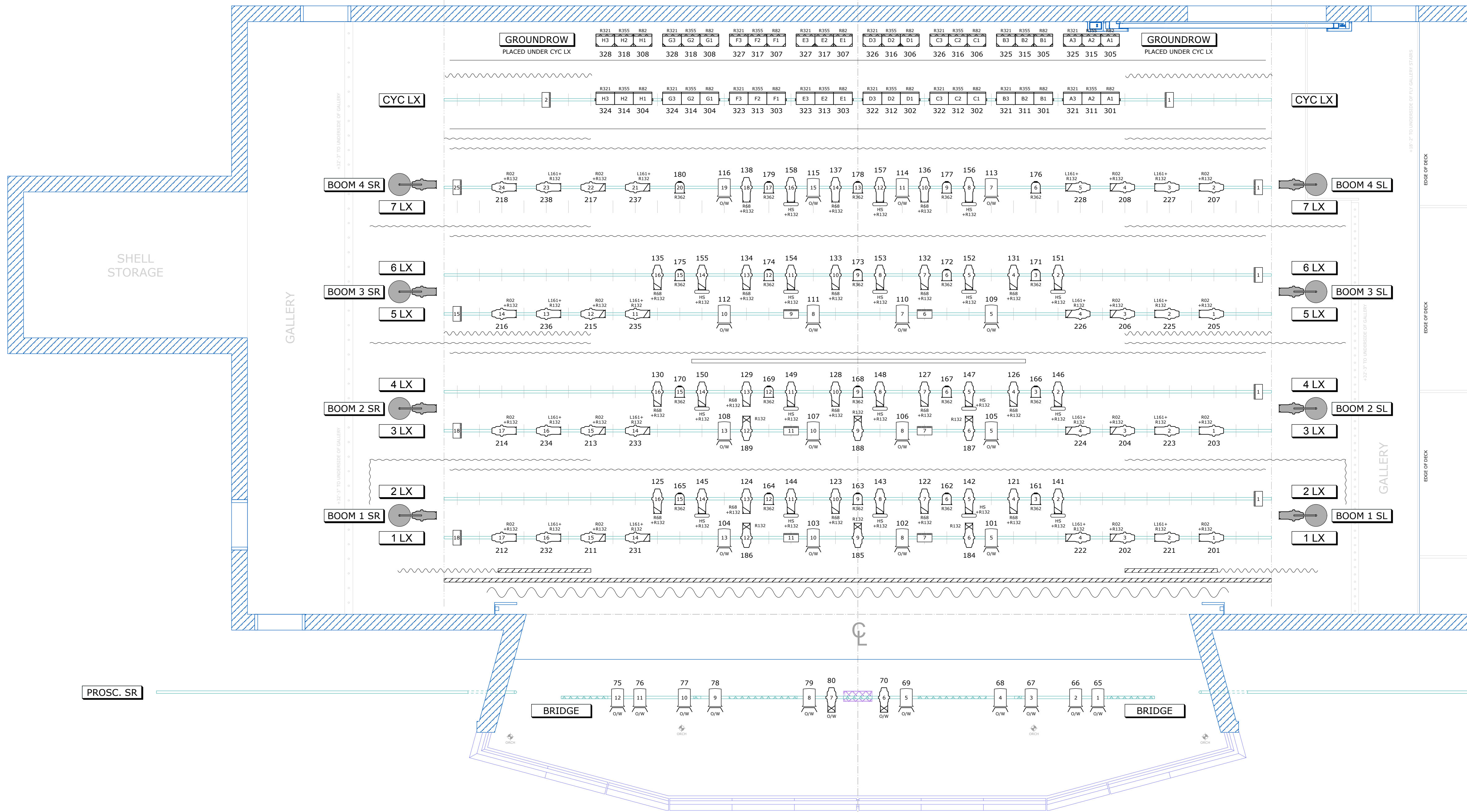
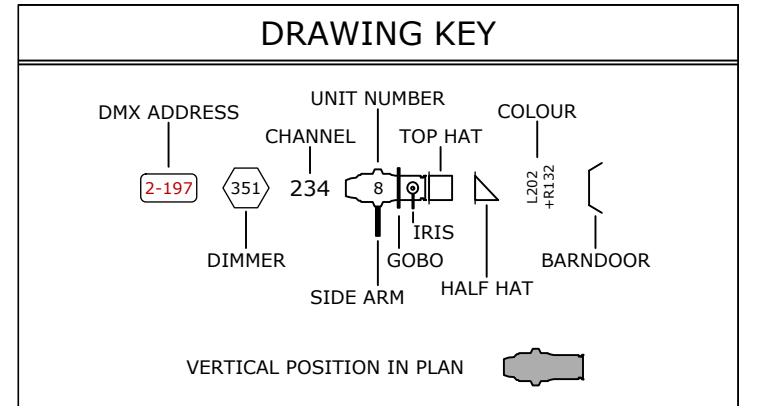


SYSTEM PIPES END HERE. PIPE EXTENSION MUST BE ADDED BEYOND THIS LINE.



LEGEND		
SYMBOL	DESCRIPTION	QUANTITY
[Symbol]	10" SOURCE 4 750W	20
[Symbol]	14" SOURCE 4 750W	29
[Symbol]	19" SOURCE 4 575W	16
[Symbol]	26" SOURCE 4 575W	66
[Symbol]	36" SOURCE 4 575W	46
[Symbol]	50" SOURCE 4 575W	4
[Symbol]	70" SOURCE 4 575W	0
[Symbol]	SOURCE 4 PAR VNSP 575W	0
[Symbol]	SOURCE 4 PAR NSP 575W	0
[Symbol]	SOURCE 4 PAR MFL 575W	24
[Symbol]	SOURCE 4 PAR WFL 575W	0
[Symbol]	RAMA 6" FRESNEL 1KW	26
[Symbol]	AURORA 3 CYC 1KW/cct	8
[Symbol]	AURORA 3 GROUNDROW 1KW/cct	8
[Symbol]	LYCIAN M2 2040 1.2KW	2
[Symbol]	WORKLIGHT	20
[Symbol]	APOLLO SMART COLOR PRO 7.25	18

LINESET ROSTER		
ALL ELECTRICS TRIMS TO THE PIPE		
ALL BORDER TRIMS ARE TO THE BOTTOM OF THE BORDER		
#	DESCRIPTION	TRIM
55	Storage (Pipe Is Not Full Width)	
54		
53	Cyc (White Filled Scrim)	
52		
51	Traveller (Black)	
50		
49	CYC LX	+28'-0"
48		
47		
46	Scrim (Black)	
45	Legs #4	
44	Border #4	+24'-0"
43		
42		
41	7 LX	+26'-0"
40		
39		
38		
37	Legs #3 (w/ Extension)	
36	Border #3	+21'-0"
35		
34		
33		
32	6 LX	+28'-0"
31		
30		
29	5 LX	+26'-0"
28		
27	Traveller (Black)	
26	Legs #2 (w/ Extension)	
24	Border #2	+21'-0"
23	Projection Screen	
22		
21	4 LX	+28'-0"
20		
19		
18		
17	3 LX	+26'-0"
16		
15		
14	Legs #1 (w/ Extension & German)	
13	Border #1	+21'-0"
12		
11		
10	2 LX	+28'-0"
9		
8		
7		
6	1 LX	+26'-0"
5		
4		
3	Portal Legs (Black)	
2	Portal Header (Black)	+20'-0"
1	Main Drape (Red)	
FC	Fire Curtain	



NOTES

- 18" CENTRES ARE TYPICAL FOR HORIZONTAL POSITIONS.
- 24" CENTRES ARE TYPICAL FOR VERTICAL POSITIONS.
- ALL SIDEARM HEIGHTS ARE MEASURED TO THE SIDEARM, NOT THE LENS.

DRAWING HISTORY		
NO.	DATE	DESCRIPTION
A	7/14/11	PLOT PREP

Main Space
THE BURLINGTON PERFORMING ARTS CENTRE
House Plot
 Operations Manager: G. FRAMPTON
 Lighting Designer: K. LAMOTTE
 Head Electrician:
 SCALE: 1/4" = 1'-0" DRAWN: AS PLATE: 2 OF 2 VERSION: A
 DATE: AUGUST 14, 2011
 REVISED:
Lighting Plot - Onstage